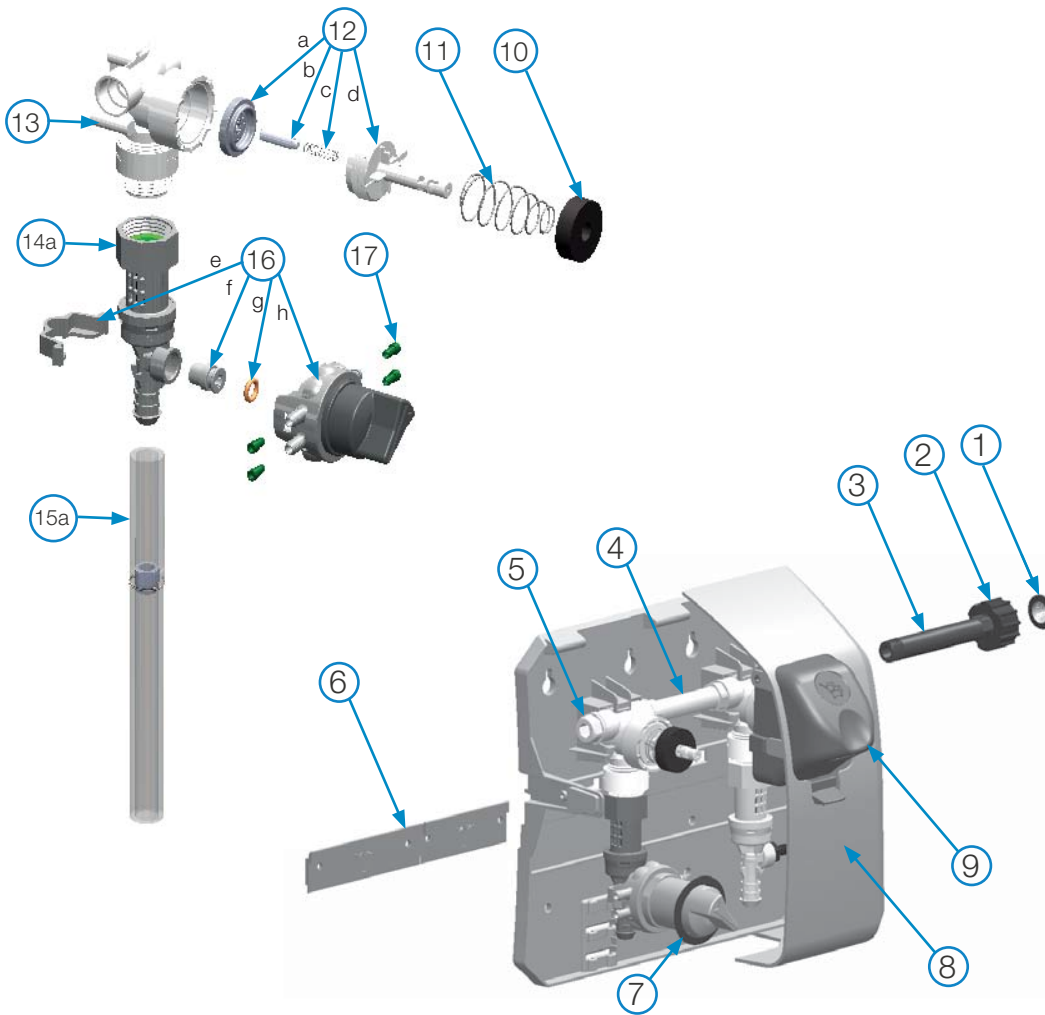
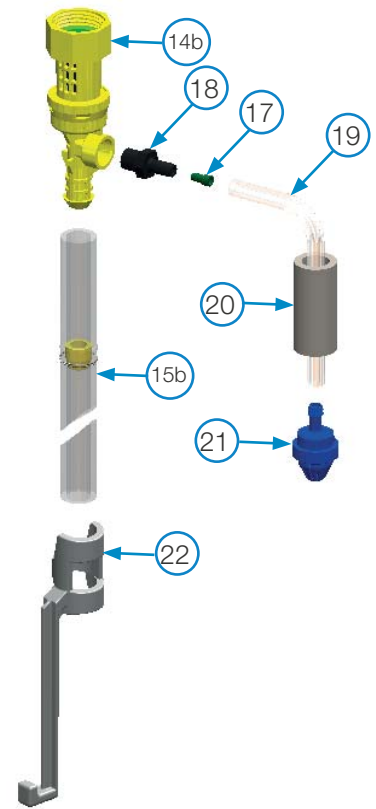


# parts diagram

## 1.0 GPM EDUCTOR (LEFT SIDE)



## 3.5 GPM EDUCTOR (RIGHT SIDE)



Key	Part No.	Description
1	HYD238100	Strainer washer
2	HYD10082830	Swivel collar (molded)
3	HYD10082811	Swivel stem (molded)
4	HYD10075902 HYD10075950	Nipple, plastic 3/8" (2 btn models) O-ring (two required per nipple)
5	HYD10098573	Kit, Pipe plug & o-ring
6	HYD10091035	Wall bracket
7	HYD10020700 HYD10020900	Selector valve grommet Back up ring for grommet
8	HYD10098544	Cabinet 2 button select + 1
9	HYD10098821 HYD10098824	Button, Bottle fill, process blue Button, Bucket fill, process blue
10	HYD10079000	Magnet
11	HYD10079010	Spring
12	HYD10075980	Valve parts kit a. diaphragm, b. armature c. spring, d. valve bonnet

Key	Part No.	Description
13	HYD10075995	Water valve
14a	HYD290	1.0 GPM eductor assembly
b	HYD291	3.5 GPM eductor assembly
15a	HYD10088822	1.0 GPM discharge tube with flooding ring (8")
15b	HYD90048495	3.5 GPM discharge tube with flooding ring (4")
16	HYD10080956	Selector replacement kit: e. support clip, f. Suction stub g. O-ring, h. selector valve assembly
17	HYD690014	Metering tip kit
18	HYD3401-R	Hosebarb
19	HYD500814 HYD500821	Tubing 1/4" x 14' Tubing 1/4" x 21'
20	HYD509900	Weight
21	HYD10089410	Footvalve -Viton (EPDM also available. Order 10076302)
22	HYD10080730	Hose hook dark grey (standard) for 3.5 GPM discharge tube

Not Shown:  
HYD641751 Security screws (for cabinet sides)

# troubleshooting and maintenance

Problem	Cause	Solution
1. No discharge	a. No water	• Open water supply
	b. Magnetic valve not functioning	• Install valve parts kit
	c. Eductor clogged	• Clean* or replace
	d. Clogged water inlet strainer	• Disconnect inlet water line and clean strainer
2. No concentrate draw	a. Clogged foot valve	• Clean or replace
	b. Metering tip or eductor has scale build-up	• Clean* (descale) or replace
	c. Low water pressure	• Minimum 25 PSI (with water running) required to operate unit properly
	d. Discharge tube and/or flooding ring not in place	• Push tube firmly onto eductor discharge hose barb, or replace tube if it doesn't have a flooding ring
	e. Concentrate container empty	• Replace with full container
	f. Inlet hose barb not screwed into eductor tightly	• Tighten, but do not overtighten
	g. Clogged water inlet strainer	• Disconnect inlet water and clean strainer
	h. Air leak in chemical pick-up tube	• Put clamp on tube or replace tube if brittle
	i. Selector out of position	• Assure selector is in position desired
3. Excess concentrate draw	a. Metering tip not in place	• Press correct tip firmly into barb on eductor
	b. Chemical above eductor	• Place concentrate below the eductor
4. Failure of unit to turn off	a. Water valve parts dirty or defective	• Clean* or replace with valve parts kit
	b. Magnet doesn't fully return	• Make sure magnet moves freely
	c. Push button stuck	• Remove button and clean cabinet/button to remove any dirt lodged in slide recess
5. Excess foaming in discharge	a. Air leak in pick-up tube	• Put clamp on tube or replace tube if brittle

\* In hard water areas, scale may form inside the discharge end of the eductor, as well as in other areas of the unit that are exposed to water. This scale may be removed by soaking the eductor in a descaling solution (deliming solution). To remove an eductor located in the cabinet, firmly grasp water valve and unthread eductor. Replace in same manner. Alternatively, a scaled eductor can be cleaned (or kept from scaling) by drawing the descaling solution through the unit. Operate the unit with the suction tube in the descaling solution. Operate the unit until solution is drawn consistently, then flush the unit by drawing clear water through it for a minute. Replace concentrate container and put suction tube into concentrate.

## warranty

### Limited Warranty

**Seller** warrants solely to **Buyer** the Products will be free from defects in material and workmanship under normal use and service for a period of one year from the date of completion of manufacture. This limited warranty does not apply to (a) hoses; (b) and products that have a normal life shorter than one year; or (c) failure in performance or damage caused by chemicals, abrasive materials, corrosion, lightning, improper voltage supply, physical abuse, mishandling or misapplication. In the event the Products are altered or repaired by **Buyer** without **Seller's** prior written approval, all warranties will be void.

**No other warranty, oral, express or implied, including any warranty of merchantability or fitness for any particular purpose, is made for these products, and all other warranties are hereby expressly excluded.**

**Seller's** sole obligation under this warranty will be, at **Seller's** option, to repair or replace F.O.B. **Seller's** facility in Cincinnati, Ohio any Products found to be other than as warranted.

### Limitation of Liability

**Seller's** warranty obligations and **Buyer's** remedies are solely and exclusively as stated herein. **Seller** shall have no other liability, direct or indirect, of any kind, including liability for special, incidental, or consequential damages or for any other claims for damage or loss resulting from any cause whatsoever, whether based on negligence, strict liability, breach of contract or breach of warranty.



Hydro Systems  
3798 Round Bottom Road  
Cincinnati, OH 45244

Phone 513.271.8800  
Toll Free 800.543.7184  
Fax 513.271.0160  
Web hydrosystemsco.com