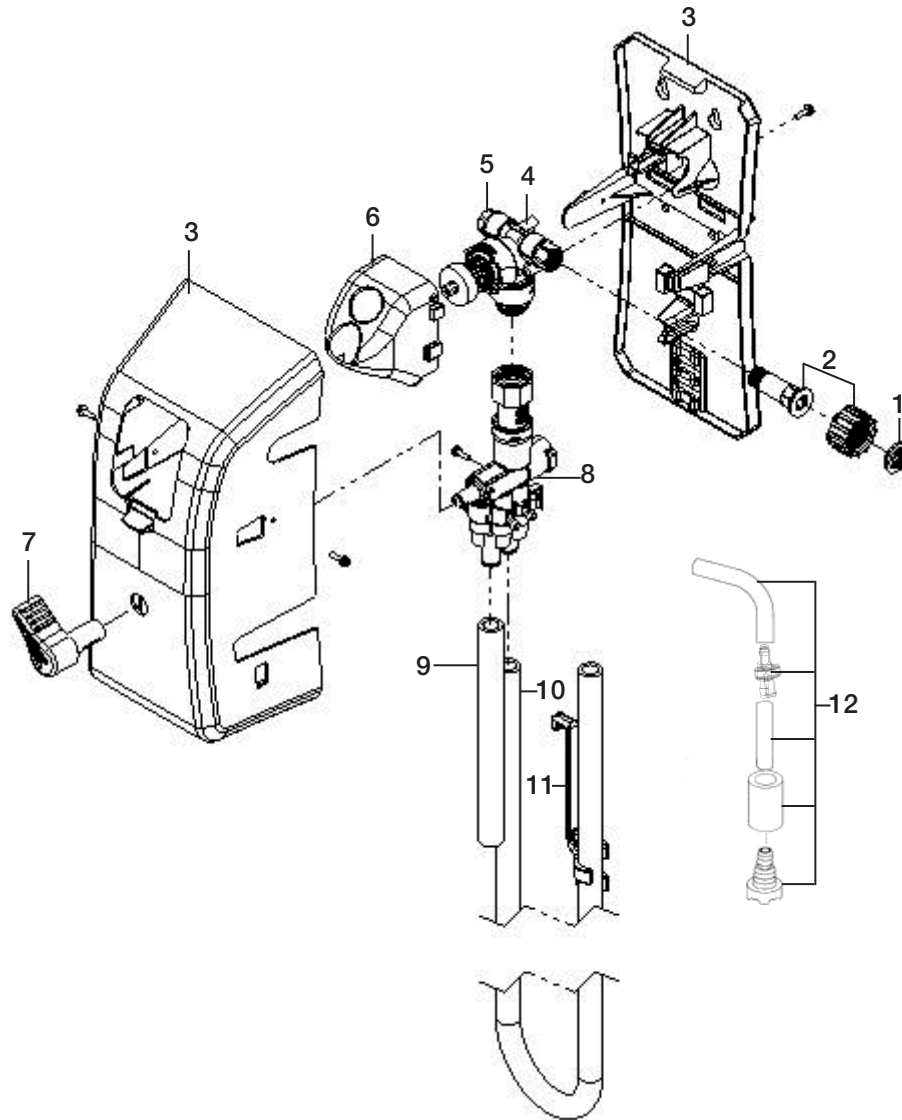


parts list / diagrams



Key	Part No.	Description
1	238100	Strainer washer
2	90096436	Kit, Water inlet
3	10098831	Kit, Cabinet Replacement 3L 1H
	10098832	Kit, Cabinet Replacement 2L 2H
	10098833	Kit, Cabinet Replacement 4L
4	10098574	Kit, ASM water valve, spring, magnet
	10075980	Kit, water valve parts
5	10098573	Kit, Pipe plug & o-ring
6	10098822	Kit, Button replacement
7	10098827	Kit, selector replacement
8		QDV, 3 low 1 high
		QDV, 2 low 2 high
		QDV, 4 low
9	505808	Tube, 1/2" x 8"
10	505806	Tube, 1/2" x 6'
11	10080730	Hose hook, dark grey
12	10098834	Kit, QDV single pick-up assembly

troubleshooting

Problem	Cause	Solution
1. No discharge	a. No water	a. Open water supply
	b. Excessive water pressure	b. Install regulator if water pressure (with water running) exceeds 85 PSI
	c. Clogged water inlet strainer	c. Disconnect inlet water line and clean strainer
	d. Magnetic valve not functioning	d. Install valve parts kit
	e. Eductor clogged	e. Clean* or replace
2. No concentrate draw	a. Metering tip or eductor has scale build-up	a. Clean (descale)* or replace
	b. Low water pressure	b. Minimum 25 PSI (with water running) required to operate unit properly
	c. Discharge tube not in place	c. Push tube firmly onto eductor discharge hose barb, or replace tube
	d. Concentrate container empty	d. Replace with full container
	e. Clogged water inlet strainer	e. Disconnect inlet water line and clean strainer
	f. Incorrect check valve installation	f. See diagram page 3
	g. Air leak in pick-up tube	g. Put clamp on tube or replace tube if brittle
	h. Selector out of position	h. Assure selector is in position desired
3. Excess concentrate draw	a. Metering tip not in place	a. Press correct tip firmly into barb on eductor
4. Failure of unit to turn off	a. Push button stuck	a. Remove button and clean cabinet/button to remove excess dirt lodged in slide recess
	b. Magnet doesn't fully return	b. Make sure magnet moves freely Replace spring if short of weak
	c. Water valve parts dirty or defective	c. Clean or replace with valve parts kit
5. Excess foaming in discharge	a. Air leak in pick-up tube	a. Put clamp on tube or replace tube if brittle

* In hard water areas, scale may form inside the discharge end of the eductor, as well as in other areas of the unit that are exposed to water. This scale may be removed by soaking the eductor in a descaling solution (deliming solution). To remove an eductor located in the cabinet, firmly grasp water valve and unthread eductor. Replace in same manner. Alternatively, a scaled eductor can be cleaned (or kept from scaling) by drawing the descaling solution through the unit. Operate the unit with the suction tube in the descaling solution. Operate the unit until solution is drawn consistently, then flush the unit by drawing clear water through it for a minute. Replace concentrate container and put suction tube into concentrate.