

A SIMPLE PROCESS

Preparation

Good looking concrete floors* start with thorough preparation. Centurion makes this normally expensive, unpleasant, time-consuming task easier and more cost-effective than ever.

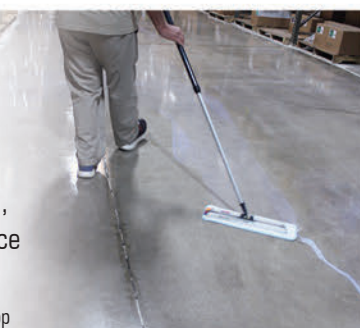
* The floor should be bare or polished concrete.



Application

Once the floor is clean and dry it's time to apply the coating. Pantheon Concrete Sealer provides excellent scuff, scratch, soil, stain and chemical resistance to your indoor concrete floors.

NOTE: If applying traditional floor finish on top of Pantheon, we recommend waiting 24 hours after the application of Pantheon.



Maintenance

Once your concrete floor has cured, using our daily and weekly maintenance procedure featuring Centurion will keep it clean and looking great.



SAFETY PROFILE

Slip Resistance

- Every floor finish we supply is slip-tested to conform to ASTM D2047 standards.
- Underwriters Laboratories (UL) slip resistance classification provides a comprehensive floor care system under which applicable products are slip-tested, including: Finishes, Restorers, and Cleaners.



Slip and Fall Support

- Essential's floor care experts have a lifetime of experience helping customers with unique floor challenges. Contact your sales representative for more information.
- Essential can provide documentation that a given product has been classified slip-resistant by Underwriters Laboratories.
- Slip resistance information for our floor care products is available on the web.



Innovation is Essential.

P.O. Box 12 | Merton, Wisconsin 53056
262.538.1122 or 800.551.9679

©2023 Essential Industries, Inc. I2523 | LT-90000BCF

www.essind.com



Innovation is Essential

CONCRETE

FLOOR CARE PROGRAM

A Simple Solution

- Durable
- Fast-drying
- Low VOCs
- Stain-resistant
- Superior adhesion

CONCRETE

FLOOR CARE PROGRAM

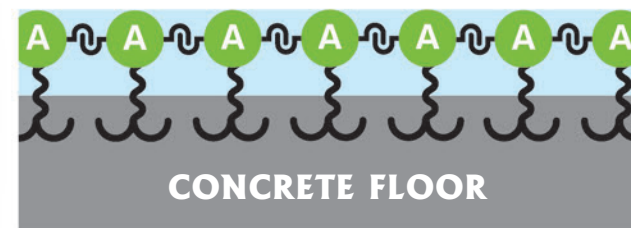
A Simple Solution

THE SCIENCE BEHIND IT...

Essential's ability to develop advanced acrylic polymers with self-crosslinking technology has given us the opportunity to design a polymer made specifically for concrete floors.

Pantheon Concrete Sealer is unlike any of our other coatings.

Pantheon's superior stain resistance, adhesion and quick curing are derived from this self-crosslinking technology. Its uniqueness continues to shine through in its ability to be removed using standard stripping methods and procedures.



Essential has created cutting edge products and well-developed procedures to provide an effective, yet simple solution to your concrete floor care needs.

With over 50 years of experience inventing brand new polymers, Essential has become a world leader in polymer innovation and floor care technology.

This extensive experience ensures complete control over the design and quality of the products from start to finish.

Innovation is Essential.



Before

After

FEATURED PRODUCTS

273CF

PANTHEON CONCRETE SEALER

Durable Sealer for Interior Concrete* and Terrazzo Floors

This one-part concrete sealer adheres to all types and ages of concrete. It is easy to prep, apply and maintain, and allows for minimal floor downtime.

- Easy to apply and dries fast
- Low odor/VOCs
- Wet adhesion properties
- Non-blushing, non-yellowing
- Excellent water resistance
- Resistant to acids, bases and stains
- Standard flat mop for application
- No grinding, buffing or burnishing required to maintain
- Stands up to ice melter and rock salt
- Eliminates cow pathing and scuffing
- Use as a bridge-coat for floor finish
- Recoat is a simple scrub/recoat process
- Slip-resistant – UL-classified

* Pantheon can also be used as a curing compound on 'green' concrete. It passes the testing protocol, ASTM C309 "Liquid Membrane-Forming Compounds for Curing Concrete."

STAIN RESISTANCE: 1 Hour Test, 1 Hour Recovery

- | | |
|---------------------------------|---|
| 10W30 Synthetic Oil: No Effect | Automatic Transmission Fluid: No Effect |
| 10W30 Motor Oil: No Effect | Gasoline: No Effect |
| Silicone Brake Fluid: No Effect | Diesel Fuel: No Effect |
| Kerosene: No Effect | Hydraulic Fluid: No Effect |
| Coke: No Effect | Windshield Fluid: Slight softening, recovers |
| 90 Weight Gear Oil: No Effect | 1:1 Ethylene Glycol/Water: Slight softening, recovers |
| Vinegar: No Effect | E85 (85% Ethanol, 15% Gasoline): Slight softening, recovers |



164CF

IMPERIUM

Concrete Guard

- Works as a guard for concrete floors
- Provides protection from spills
- Offers superior chemical resistance
- Mar and scratch resistance
- Non-yellowing, fast drying formula
- Responsive to burnishing with diamond impregnated pads
- Applies easily using standard equipment
- Large coverage area - 1500-2000+ ft²/gallon



2174FC

CENTURION

Concrete Cleaner and Densifier

- For maintaining, cleaning and densifying concrete surfaces
- Superior all-around cleaning powered by Blue Concentrate
- Improves performance of concrete with each use
- Mild pH when diluted – great for cleaning heavily soiled floors
- Free-rinsing, non-dulling, and low foam
- Dilute 2 ounces per gallon
- Neutralizes ice melter residue prior to recoating

