

SYSTEM 2000™ COMPACT

OPERATING AND INSTALLATION PROCEDURES

EQ20EBCMPE1 - EQ20EBCMPE4



SAFETY NOTE

- Wear protective clothing and eyewear when dispensing chemicals.
- Always observe safety and handling instructions listed on the MSDS.
- Always dispense liquid away from others and into approved, labeled containers.
- Keep equipment clean to maintain proper operation.
- Use caution whenever metering tips or bottles are changed.
- This equipment must be maintained by properly trained personnel.

PACKAGE CONTENTS

- Dilution Control Unit
- Discharge Tube with Hose Hook (4 GPM only)
- Metering Tip Kit
- Mounting Kit
- Product Labels
- Wall Mount Bottle Holder (EQ2000BTLRK)
- Chemical Supply Tube (1/4" x 24")
- Black Cap
- Check Valve

INSTALLATION AND OPERATING INSTRUCTIONS

NOTICE TO INSTALLER/PLUMBER

The manufacturer is not responsible to distributor or any customer for compliance with local plumbing codes and regulations regarding proper installation of the unit or cross connections to public water supplies. Local plumbing regulations may require backflow prevention devices or different methods of installation. The customer must always verify that installation of the unit meets local plumbing codes and regulations. Meets ASSE 1055B standard for backflow prevention.

Choose the most efficient location (consider water supply and easy access for filling containers). Installation above or near sink or water supply is recommended. Repeat the following procedures for each unit installed.

1. Remove cabinet cover. Install the discharge tube on the outlet of the eductor (See Figure "B", #11). It goes over the smaller barbed part on the bottom of the eductor. (Repeat for all eductors).
2. Drill holes for the two wall anchors with a 5/16" drill bit using the cabinet back as a template for proper spacing of the mounting screws. Install mounting anchors, then screw in top two anchors. Slide keyholes in cabinet back over screw heads, tighten screws, then install bottom screw. Do not mount more than 6 feet (1.8 meters) above the bottom of the concentrate container, nor below the highest concentrate level. (Never mount your concentrate higher than the proportioner).
3. Select a metering tip (see back page) and insert the tip into the eductor hose barb. (See Figure "C" #7).
4. Gather black cap, blue check valve and 1/4" tubing.
5. Cut tubing to 1 1/2" in length. Slide this short piece onto black cap (See Figure "B", #14).
6. Slide blue check valve onto short piece of tubing with the clear portion pointing down and the blue portion pointing up (See Figure "B", #14). **Note:** Improper installation of check valve will keep chemical from drawing.
7. Slide remaining length of 1/4" tubing onto blue half of check valve. Now slide entire chemical inlet tube assembly over the eductor hose barb (See Figures "B" and "C" #4).
8. Attach the white Wall Mount Bottle Holder to wall using supplied anchors and screws (See Figure "A" #18). Be sure bottle holder is mounted below proportioner.
9. Connect water supply hose of at least 1/2" ID to either side of the valve assembly. Be sure to place the male plug in the opposite side of the water inlet. (Minimum 20 PSI pressure, with water running, is required for proper operation.) Attach the hose to the water supply source. Turn water supply on. Insert the product as follows:
 - Remove cap from concentrate bottle.
 - Screw black cap on the chemical inlet tube (See Figure "B" #15) onto concentrate bottle. If desired, cut 1/4" tubing to length.
 - "Snap" concentrate bottle onto Wall Mount Bottle Holder at narrow part of bottle (See Figure "A").

10. Place supplied product label below the button to correspond with the product that will be dispensed.
11. Purge air from the system by depressing the button briefly. There may be some water discharge from the eductor vents until the air is purged. For this reason, the use of quick disconnects on the water supply is not recommended.
12. Push button to start flow of desired water/concentrate solution and hold until solution starts to be discharged. (Be sure to have a bottle or other receptacle under the discharge tube.) Prime each of the supply tubes in this way. Then push the button whenever dispensing is desired and release button to stop flow of solution. Buttons may be converted to locking buttons by bending back the tabs under the button. This allows continuous dispensing without holding the button for 4 GPM use.
13. It is essential that the discharge tube not be obstructed. If discharge is restricted, water will flow out of the eductor vents.

SERVICE/TROUBLESHOOTING INSTRUCTIONS:

CAUTION

Turn off water supply before servicing. Disconnect when not in use.

PROBLEM	CAUSE	SOLUTION
1. No discharge	a. No water	a. Open water supply
	b. Magnetic valve not functioning	b. Install valve parts kit
	c. Eductor clogged	c. Clean or replace
2. No concentrate draw	a. Metering tip or eductor has scale build-up	a. Clean or replace
	b. Low water pressure	b. Minimum 20 PSI (with water running) required to operate unit properly
	c. Discharge tube and/or flooding ring not in place	c. Push tube firmly onto eductor discharge hose barb, or replace tube if flooding ring is gone
	d. Concentrate container empty	d. Replace with full container
	e. Inlet hose barb not screwed into eductor tightly	e. Tighten, but do not overtighten
	f. Check valve upside down	f. Be sure the blue side is facing up, clear side down
	g. Clogged water inlet strainer	g. Disconnect inlet water line and clean strainer.
3. Excess concentrate draw	a. Metering tip not in place	a. Press correct tip firmly into eductor hose barb on eductor
4. Failure of a unit to turn off	a. Water valve parts dirty or defective	a. Clean or replace with valve parts kit
	b. Magnet doesn't fully return	b. Make sure magnet moves freely
	c. Push button stuck	c. Be sure locking tabs on button are in unlocked position for 4 GPM
5. Excess foaming in discharge	a. Air leak in chemical inlet tube assembly	a. Replace tubing or put a clamp on it.

FIGURE "A"
SYSTEM 2000™ COMPACT

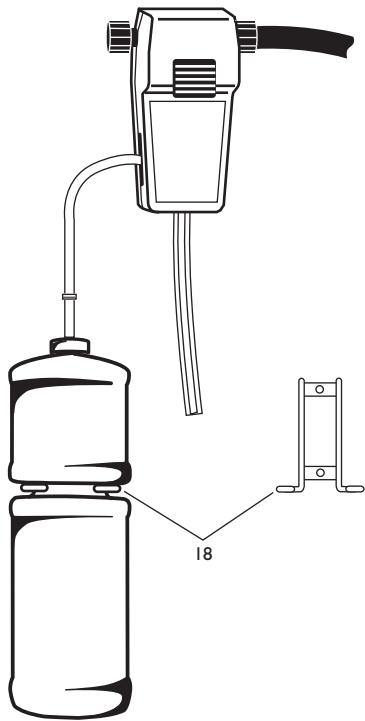


FIGURE "B"
KEY COMPONENTS

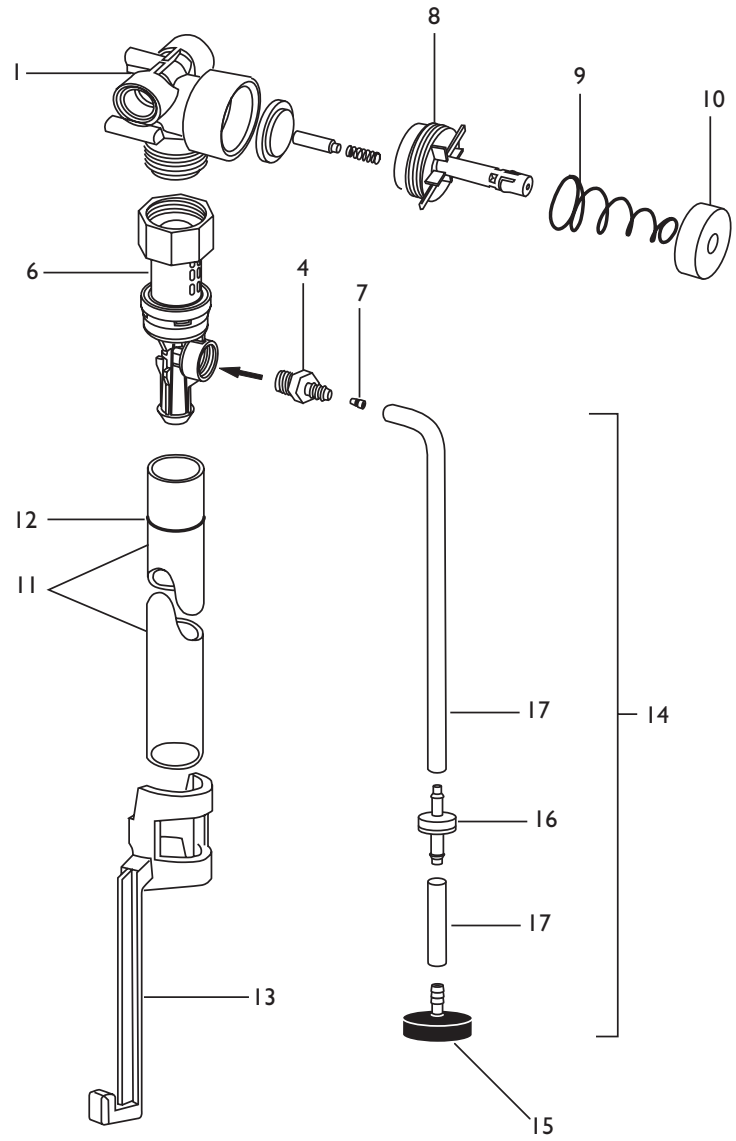
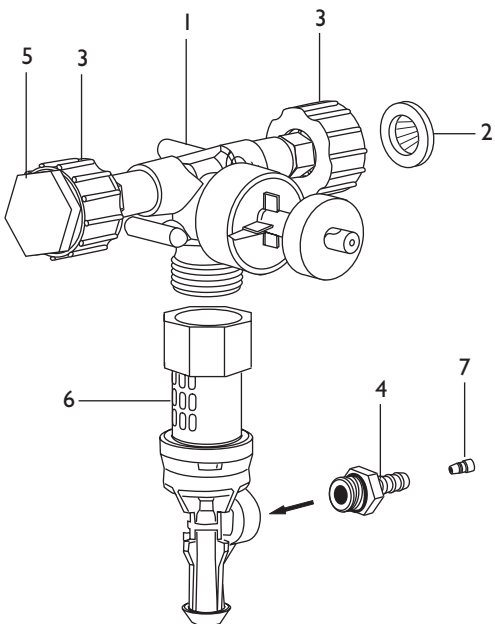


FIGURE "C"
WATER HOOK-UP AND TIP PLACEMENT



PARTS KEY

- | | |
|---|---|
| 1. Valve Assembly | 11. Discharge Tube |
| 2. Strainer Washer | 12. Flood Ring |
| 3. Water inlet | 13. Discharge Tube Hook
(4 GPM only) |
| 4. Educator Hose Barb | 14. Chemical Inlet Tube Assembly |
| 5. Male Plug | 15. Black Cap |
| 6. E-Gap Educator
Gray - 1 GPM
Yellow - 4 GPM | 16. Check Valve |
| 7. Metering Tip (from kit) | 17. 1/4" Tubing |
| 8. Bonnet Assembly | 18. Wall Mount Bottle Holder |
| 9. Spring | |
| 10. Magnet | |

DILUTION TIP CHART - SYSTEM 2000™ COMPACT

PRODUCT	DILUTION	1 GPM TIP	4 GPM TIP
Quat 256 #1	1:256	Light Gray	Purple
Restroom Cleaner #2	1:19	Brown	N/A
Glass Cleaner #3	1:25	Dark Blue	N/A
Neutral Cleaner #4	1:256	Light Gray	Purple
Non-Butyl Degreaser #5	1:128	Black	Brown
All Purpose Cleaner #6	1:128	Pink	Aqua
	1:256	Light Gray	Purple
Restroom Cleaner and Disinfectant #7	1:64	Dark Gray	Orange
Heavy-Duty Spray Cleaner #8	1:19	Brown	N/A
Foaming Restroom Cleaner #9	1:10 (bowl)	Tan	N/A
	1:20 (heavy soil)	Brown	N/A
	1:40 (daily)	Aqua	N/A
Neutral Germicidal Cleaner #10	1:128	Pink	Aqua
Citrus Scrub 'N Shine #12	1:64	N/A	Tan
	1:320	Light Gray	Dark Gray
Glass & Surface Cleaner #14	1:32	Aqua	N/A
Smoke Out Odor Counteractant #15	1:32	Aqua	Tan
Potpourri Odor Counteractant #16	1:32	Aqua	Tan

TIP INFORMATION CHART SMALLEST DIAMETER TO LARGEST DIAMETER

For more concentrated product, increase recommended tip size one color

TIP COLOR	TIP SIZE (INCHES)
Light Gray	.008
Pink	.010
Black	.011
Dark Gray	.012
Purple	.014
Aqua	.018
Dark Blue	.022
Brown	.023
Orange	.025
Tan	.035
No Tip	.187



Merton, Wisconsin 53056-0012 • USA
©2010 Essential Industries, Inc. E2510
www.essind.com

SP5086-1
SP5087-4