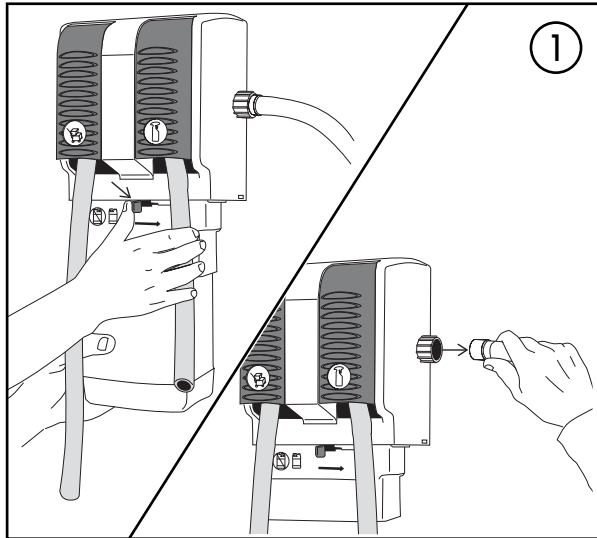
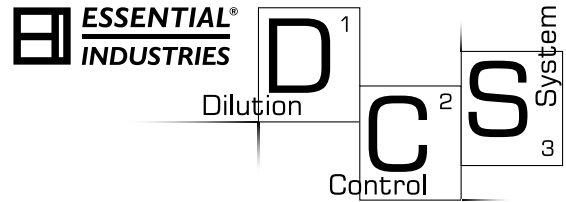
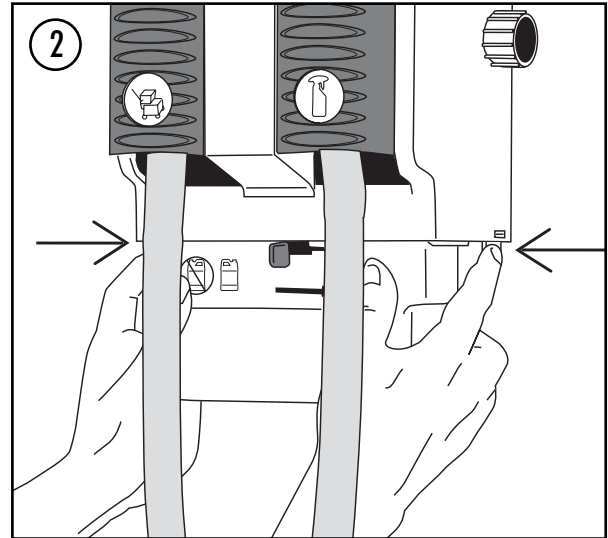


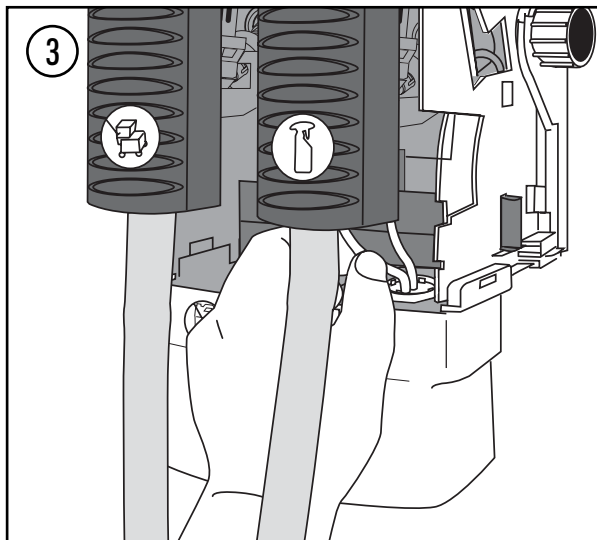
Wall Mount Unit Seal Disc Replacement Directions



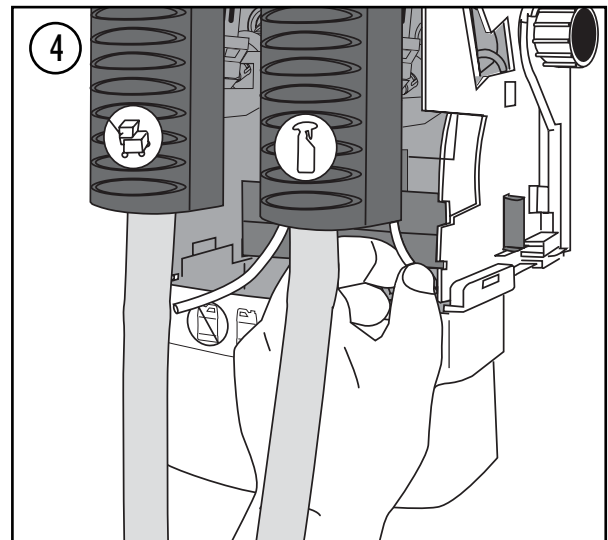
1. Disconnect chemical bottle and water supply hose from dispenser.



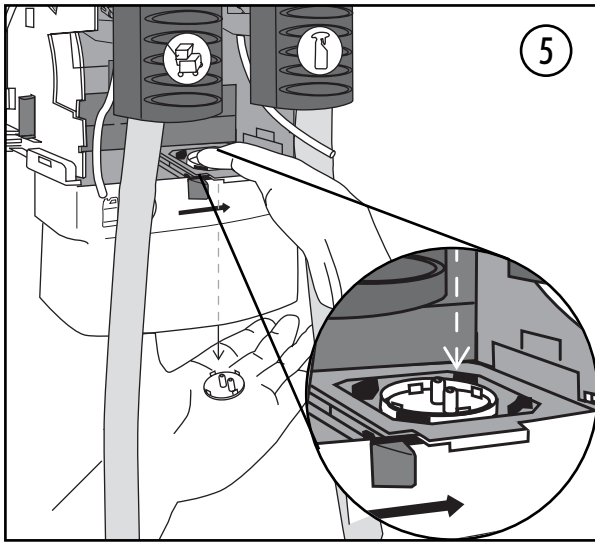
2. Remove cover by pressing tabs under cover.



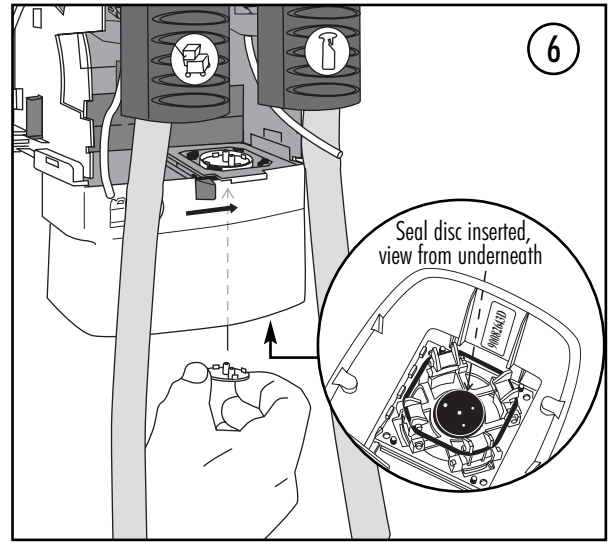
3. Disconnect high-flow pick-up tube from barb on shroud.



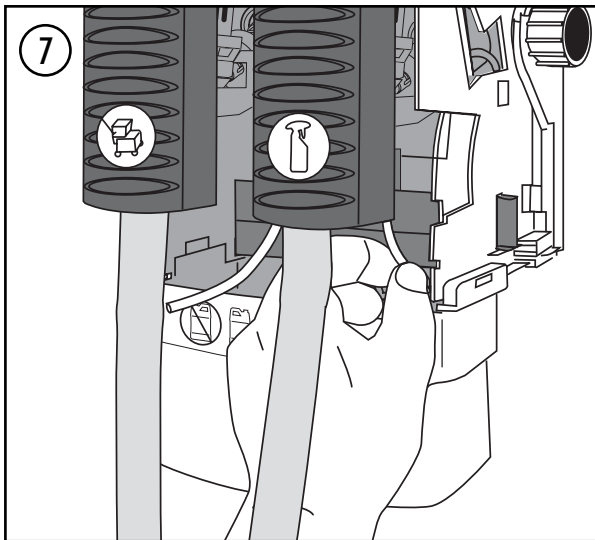
4. Disconnect low-flow pick-up tube from barb on shroud.



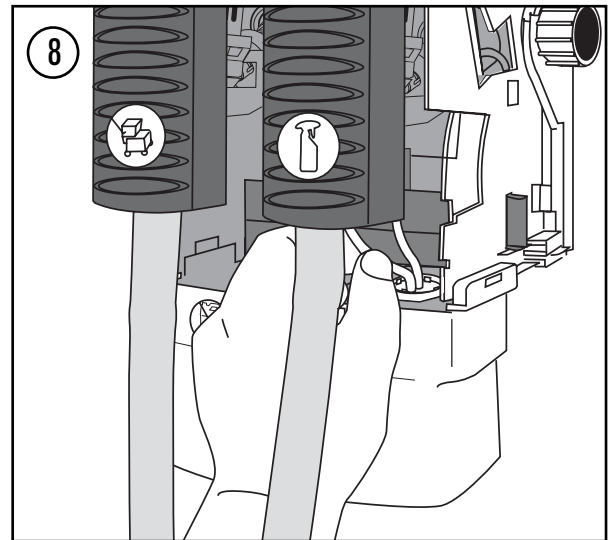
5. Press down firmly with thumb over both barbs to remove seal from shroud.



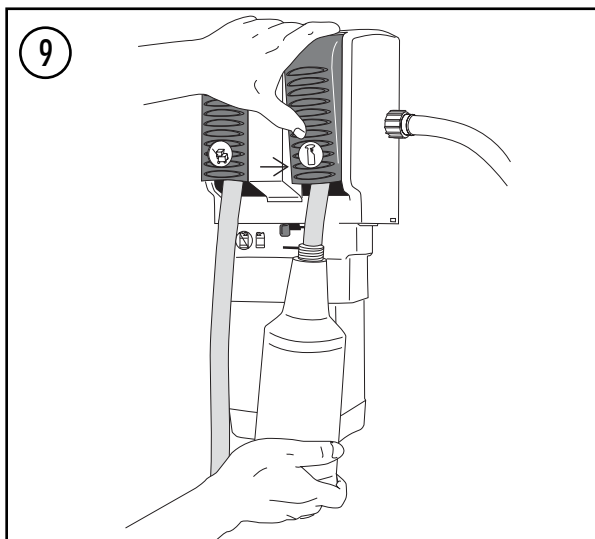
6. Align barbs of new seal with slot in shroud. Press seal firmly into place ensuring all 4 tabs are secure.



7. Reconnect low-flow pick-up tube to center barb on shroud.



8. Reconnect high-flow pick-up tube to outside barb on shroud.



9. Replace cover, reconnect water supply hose and chemical bottle. Purge air from dispenser by activating buttons for both high and low-flow.



Merton, Wisconsin 53056-0012 • USA
 ©2008 Essential Industries, Inc. D2108
 www.essind.com