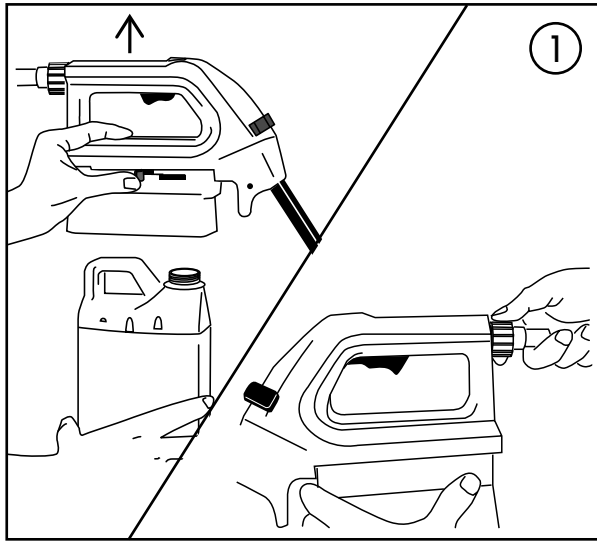
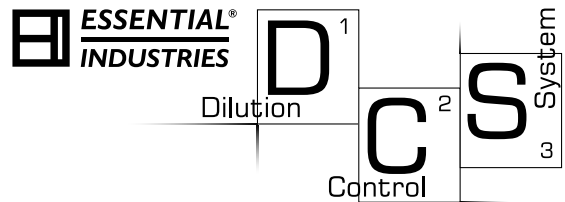
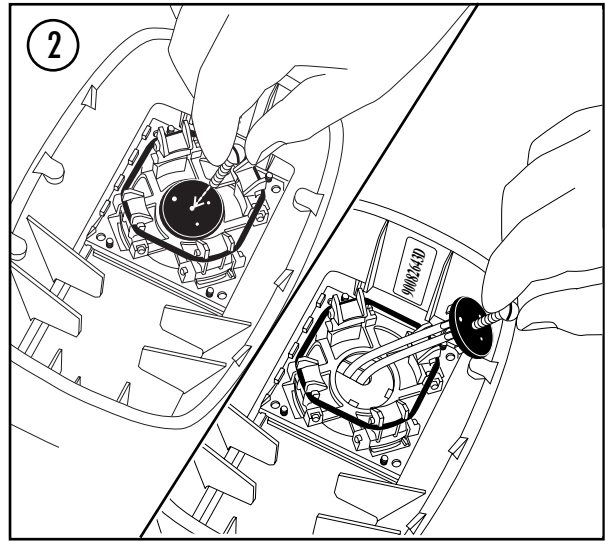


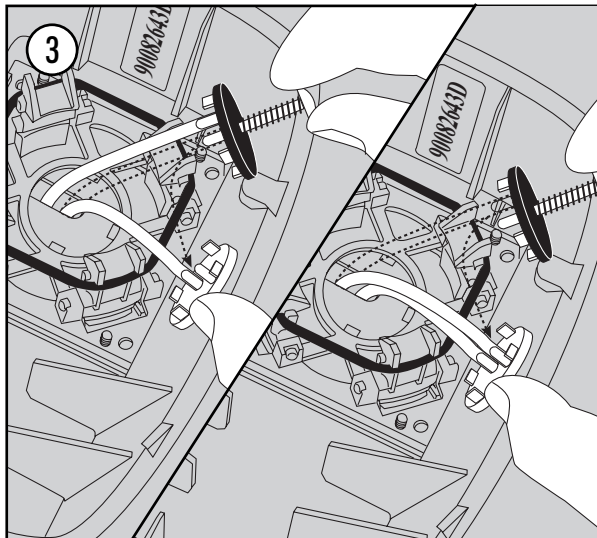
Portable Unit Seal Disc Replacement Directions



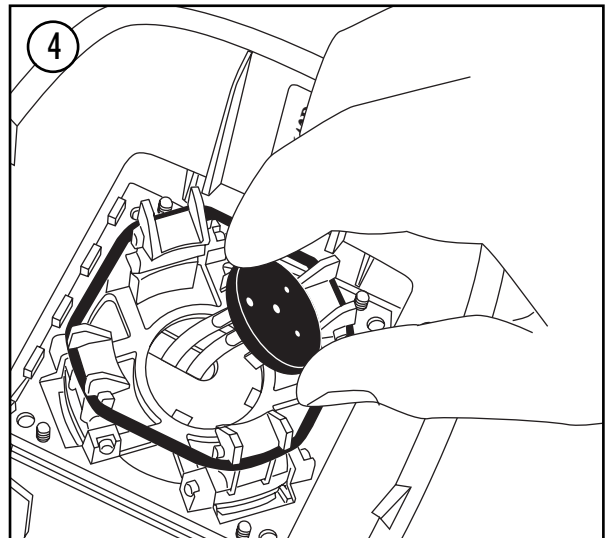
1. Disconnect chemical bottle and water supply hose from dispenser.



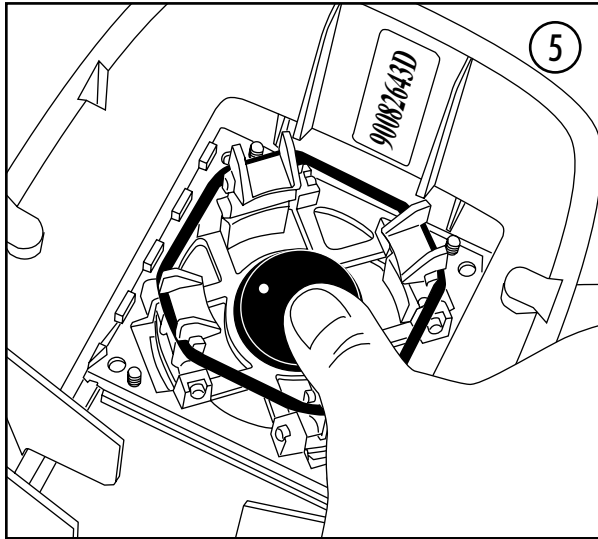
2. Insert a screw at least 2" long and at least 1/8" diameter into center hole of old seal. Tighten screw enough to be able to release seal from shroud.



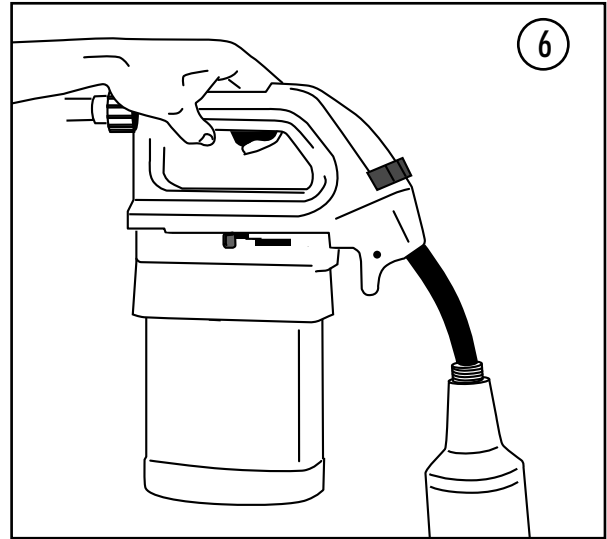
3. Disconnect the low-flow pick-up tube from the center barb of old seal then connect it to the center barb of new seal. Disconnect the high-flow pick-up tube from outside barb of old seal then connect it to the outside barb of new seal. Discard old seal.



4. Gently push pick-up tubing back up into dispenser allowing new seal to be positioned into shroud.



5. Press seal firmly into place ensuring all 4 tabs are secure.



6. Reconnect water supply hose and chemical bottle. Purge air from dispenser by activating both high and low-flow.



Merton, Wisconsin 53056-0012 • USA
©2008 Essential Industries, Inc. D2108
www.essind.com